

AUGUST 2019 ₹35

# WOW!

HYDERABAD

## LIVING WITH ART: INSIDE LUXE HOMES

*City*

DRONES THAT  
DISPEL  
MOSQUITOES

*Trends*

NAIL THE  
PARTY LOOK

*Food*

FROM PARIS  
TO HYD:  
ARAKU  
COFFEE

*Leisure*

A DINOSAUR  
PARK IN TOWN

NEW!  
INTO THE  
ATELIERS OF  
HYDERABAD'S  
ARTISTS





# INSIDE THE CITY'S MOST ARTISTIC HOMES



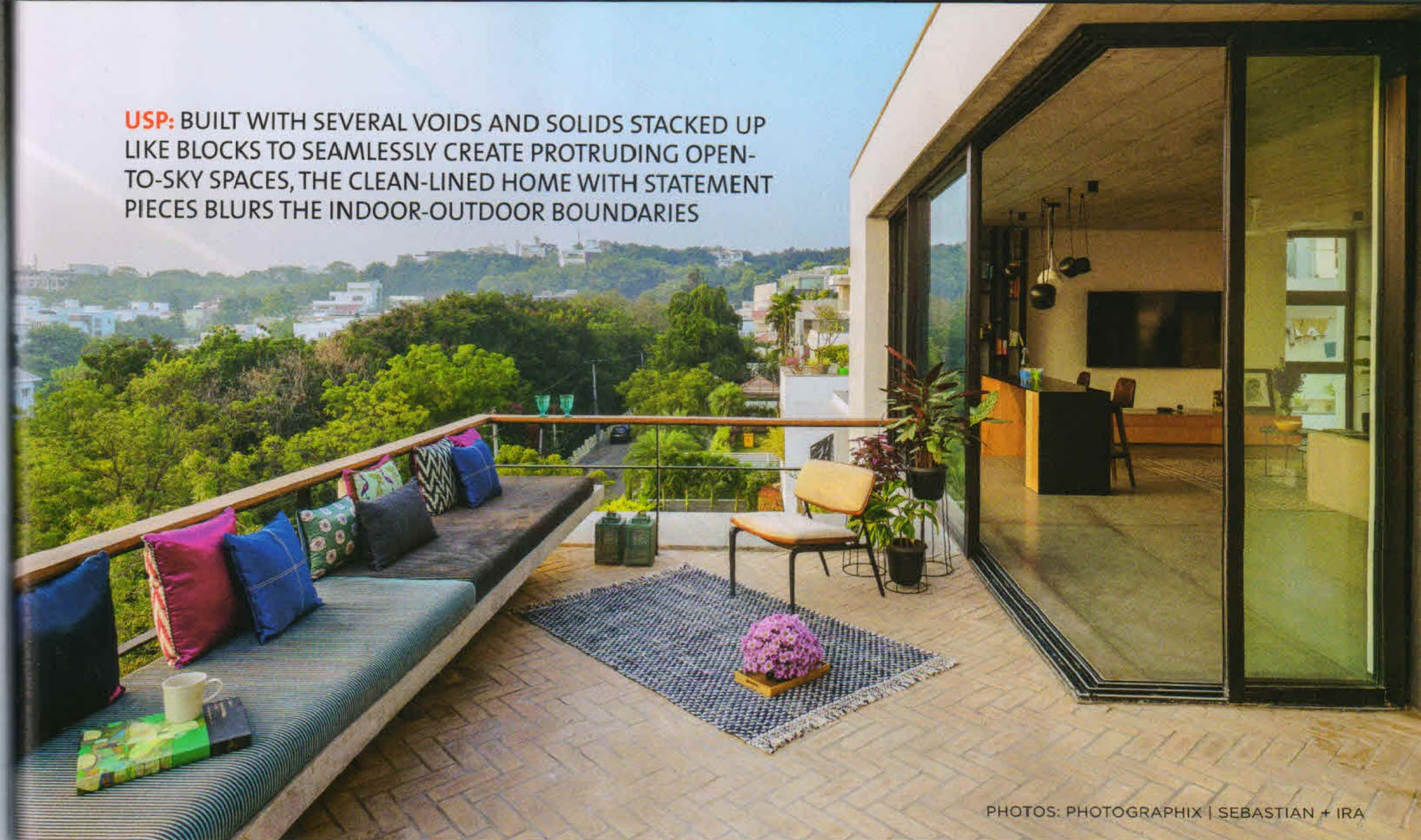
ART CAN BREATHE LIFE INTO A HOME, INITIATE CONVERSATION AND IS OFTEN AN EXPRESSION OF THE OWNERS' PERSONALITIES AND TASTES. WHEN IT CONVERGES WITH ULTRA-MODERN ARCHITECTURE AND LUXURY FURNITURE, THE RESULTS ARE USUALLY PHENOMENAL. WOW! FEATURES THREE NEWLY BUILT HOMES IN THE CITY THAT ARE HIGH ON AESTHETICS AND EPITOMES OF EXPERIMENTAL DESIGN WITHOUT COMPROMISING ON COMFORT. BE IT TASTEFUL ACCESSORIES OR PAINTINGS AND SCULPTURES BY SOME OF THE MOST RENOWNED ARTISTS, THEY SPELL SWANK AND CLASS

TEXT: SHARMISTHA MAJI

PHOTO: PHOTOGRAPHIX | SEBASTIAN + IRA



A VIEW OF THE ENTRANCE AND THE SPUN CHAIR



**USP:** BUILT WITH SEVERAL VOIDS AND SOLIDS STACKED UP LIKE BLOCKS TO SEAMLESSLY CREATE PROTRUDING OPEN-TO-SKY SPACES, THE CLEAN-LINED HOME WITH STATEMENT PIECES BLURS THE INDOOR-OUTDOOR BOUNDARIES

PHOTOS: PHOTOGRAPHIX | SEBASTIAN + IRA

# MINIMALISTIC ELEGANCE



THE FAMILY LIVING ROOM

The understated elegance and modernist architecture of businessman Rajesh and wife Preeti Reddy's new home is complimented by quirky, standout pieces throughout the 12,500 sq. ft. space. Preeti, a fashion designer, says she wanted a non-fussy and a low maintenance home with clean lines and a central feature in every room. "When too much is happening, your attention goes all over the place," she says.

Award winning architecture and interior design firm EL + D, founded by Kanan Modi, created the home, built around large rocks. While some of them had to be chipped, the rocks have been retained on two sides of the corner plot. "The first two things Preeti told me were that they wanted a house that was flooded with natural light, and to preserve a tree that was on site, besides water harvesting and solar lighting. Keeping these things in mind, we created a balance between the mid-century modern and new age dynamism," says Kanan.

### INTERPLAY OF VOIDS AND NATURAL LIGHT

Spread across three levels, the ground floor has a formal and family lounge, the kitchen, dining and two open-to-sky courtyards on either ends. The first level houses the master bedroom, guest room, a gym and a spa while the upper level is dedicated to their two daughters – Rishika, 22, and Alekya, 19 – which consists of a living area, terrace and their two bedrooms, making it seem like it is their own penthouse. "There is a lot of focus on bringing the outdoors into living spaces. All common areas are divided by moving walls, which are hidden within a pocket when not in use. A lounge on the second floor has a concrete board formed ceiling, seamlessly extending outdoors," explains Kanan.

Solids and voids have been added in the form of protruding outdoor spaces and terraces throughout the house, to create an interesting play of levels almost stacked up like blocks. The architect split the blocks laterally to create courtyards and



RAJESH AND PREETI

PHOTO: BALU



“The home’s design language finds a balance between minimalistic elegance and mid-century inspirations to create a seamless amalgamation of contemporary accents with eclectic pieces”



MONKEY LAMPS BY SELETTI IN THE POWDER ROOM

slits to form sky-lights. These vertical slits flood every corner with controlled natural light. To filter in light into the parking space, which shares boundaries with a party area, she cast 1200 custom-sized bricks to create a screen that transformed the space with its dramatic play of light.

**ART AS AN ACCENT**

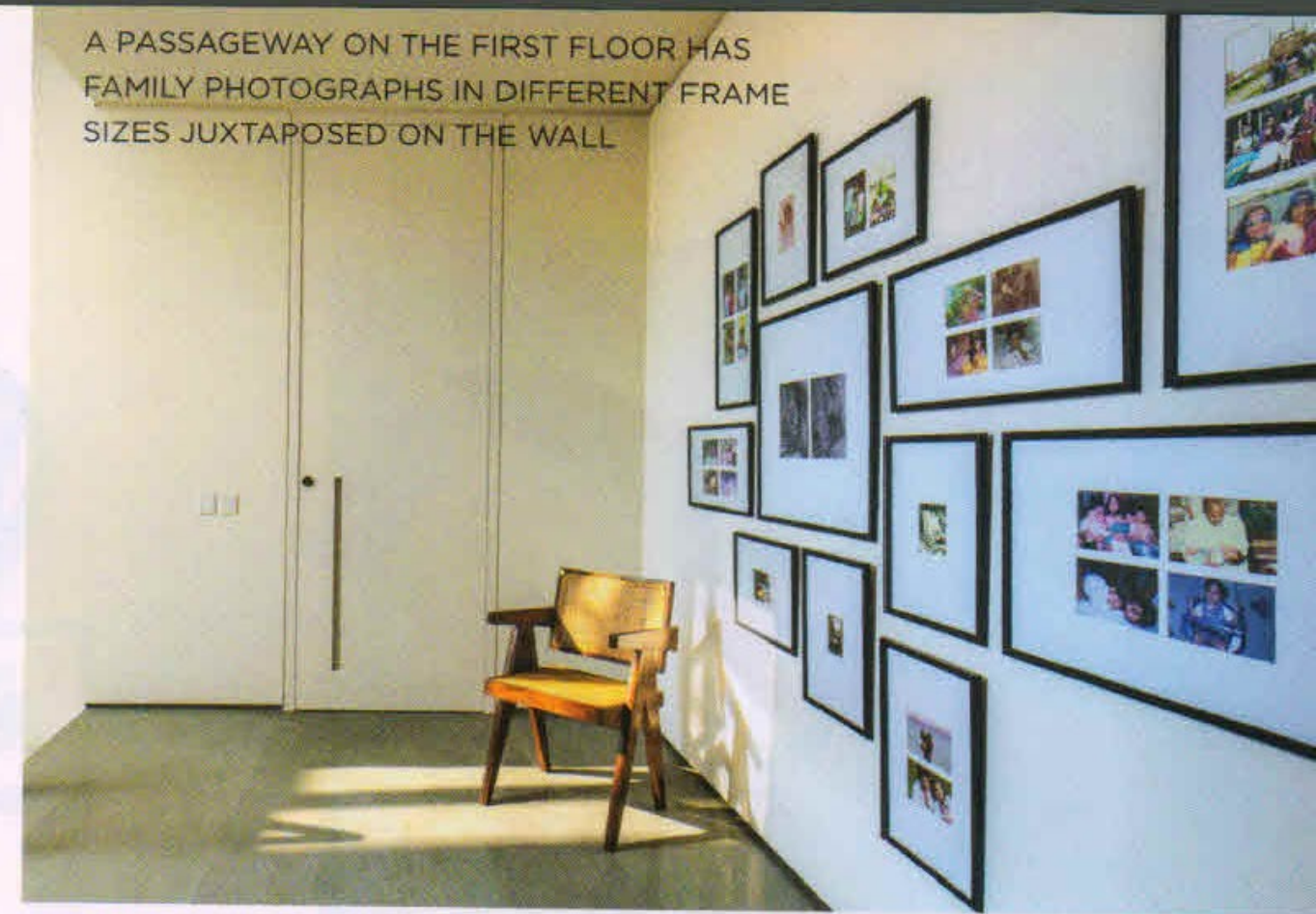
The use of Kandla grey sandstone flooring and white walls lets the eclectic furniture and décor pieces shine against the muted color palette of the house, which took two years to complete. “We tried to add hints of colors with some teal and mustard yellow furniture. Also, I wanted my furniture and other accessories to be artworks by themselves and add a sculptural dimension,” says Preeti.

The ground level has a statement wall overlooking the main door and staircase that demands your attention as you enter. The long faceted stone which forms the spine of the house was built using large slabs that were hand textured and installed with a high level of precision. “The facets allow the light to bounce off its surface at different angles throughout the day – through the eastern outdoor space in the morning, and through the west-facing backyard in the evening,” says Kanan.

**DASH OF QUIRK**

A spun chair – designed by award winning British designer Thomas Heatherwick for Italian manufacturer Magis – adds an element of fun. The chair, standing in front of the wall, is made from rotation moulded polypropylene with detailing of fine ridges, and can rotate and rock in three dimensions.

The living rooms are seamless geometrical spaces, where asymmetrical center tables add a hint of variety. A giant spider shaped chandelier light on the ceiling above the dining table brings drama to the space. Paintings on the walls by artists like Pratul Dash, George Martin and ceramics by Vinod Daroz are eclectic and fit in seamlessly. The formal living room and the dining area share a collapsible door that opens up to a beautiful lawn with a sleek bar. A powder room on this floor is a special



A PASSAGEWAY ON THE FIRST FLOOR HAS FAMILY PHOTOGRAPHS IN DIFFERENT FRAME SIZES JUXTAPOSED ON THE WALL

feature of the house as it is built around a monkey lamp by Italian design house Seletti. Swinging monkeys hold the bulbs while the stones of various shades and textures leftover from the construction have been mixed to create a striped pattern on the floor.

**OPEN AND INVITING SPACES**

The staircase railing made with timber is meticulously concealed in the wall, with an added lighting detail. The master bedroom opens up to a lawn where the owners can sit back and soak in the view. A cool terrace on the kids’ floor has a platform adorned with colorful cushions for informal chats.

Overall, the home’s design language finds a balance between minimalistic elegance and mid-century inspirations to create a seamless amalgamation of contemporary accents with eclectic pieces. The protruding outdoor spaces at every corner offer enough options for entertainment and to slow down and take in moments. So it is no surprise when Preeti says, “Even before we moved in, we have been having people over and everyone’s loved it so far – not just for the design but also for the comfort and welcoming effect.”



SHIKA'S BEDROOM

**Quickies**

**First purchase made for the home:** The spun chair. It is such a cool piece of art, yet so functional.

**Preferred area for the morning cuppa:** The courtyard.

**Family spot:** The living room couch. We decided not to have the TV in any of the rooms, so that the family can sit together to watch TV.