

₹100 March 2015

SOCIETY

A MAGNA PUBLICATION  
www.societyinteriors.co.in

# INTERIORS

Complimentary Copy Not For Sale TOTAL 208 PAGES

DELLA ADVENTURE AND  
DELLA RESORT'S  
MEDITERRANEAN MAGIC



**PLUS** Bobby Mukherji  
Ayaz Basrai  
Shailesh Veera  
Meenakshi Dutta  
Navjot Paul Singh &  
Atul Sharma





*Biological E. Limited*  
Celebrating Life Every Day

# CONSCIOUS DESIGN

AN AMALGAMATION OF EXPRESSIVE DESIGN ASPECTS AND SOLID, FUNCTIONAL REALISM IS WHAT MAKES PHARMACEUTICAL FIRM **BIOLOGICAL E LIMITED'S** OFFICE IN HYDERABAD TRULY DISTINCTIVE.

Text: Nandini R. Penna Photographs: Courtesy The Architect

The elegant inviting reception area and lobby has bright seating arrangement that add a pop of colour.



# A

r. **Kanan Modi** of Hyderabad-based **EL + D Architecture & Interior Design** is known for his unique and tactful designs. Using his superior design acumen, Kanan created a high-tech corporate office for pharmaceutical firm **Biological E Limited** that is not only energy-conscious, but is also employee-friendly. "The client is a multi-national vaccine and pharmaceutical manufacturing firm based in Hyderabad. Owing to their nature and scale of work, the client wanted an office at par with international design standards. They wanted an office that promotes collaboration and openness; a work environment which would be bright, spacious, welcoming and comfortable to its employees as well as visitors, both Indian and global," Kanan says.







3



4

2

The warm discussion space in the Managing Director's room.

3

The chill out zone on the Directors' floor.

4

The discussion space in the Vice-President's room.





5

The Directors' cabins portray transparency. Notice the creatively designed planters which are actually extension of the seats in the Directors' cabins.

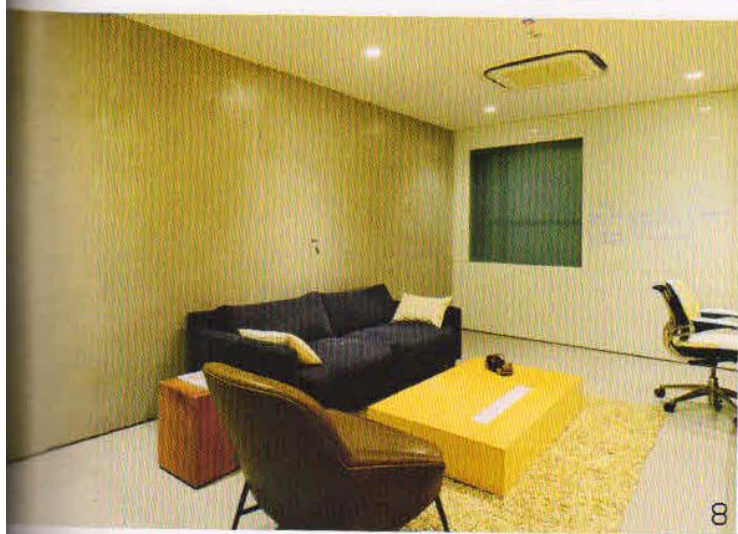
6

The beautiful wall clad with bamboo sections and the dash of colour of the benches add character to the space.



The 20,000 sq. ft. office is located in the posh Jubilee Hills area spreads over four zones across four floors. The ground floor has a massive glass doorway; however, the plush green wall flooded with natural light is the highlight of this space. This floor has the formal reception and seating area and adopts a bright colour palette. The mustard hued concrete flooring reflects energy and has a warm effect on occupants. The reception desk has a white Corian counter cantilevered off a veneered panel, which mirrors the customised exquisite light above. The meticulously designed grey panelled backdrop behind the reception desk is clad with aluminum panels giving the space an outdoor touch. The varied materials and elements in this zone are just telling of what lies ahead.





The first and second floors are staff areas. The designer believes this space is special as from here positive vibes travel around the office. The concept of the office is transparency and one can easily glance across the entire floor without visible hindrances. "The idea was to create a transparent and homogenous working environment, which is simple and has single lines," he adds. The floors are designed meticulously with workstation cubicles occupying the central space, while translucent cabins in the periphery. The monotony of grey on certain walls is broken with flashes of green. The breakout zone is on the second floor and quite trendy with its customised strip skewed lighting and comfortable seats. Here, the walls have charcoal coloured concrete finish, similar to some walls on the third floor.

7  
The comfortable lounge near the Board room.

8  
The discussion space in the Vice-President's room.

9  
The formal and well-equipped Board room.





10

The third floor has bamboo sections through which natural light flows in via slits in the external wall. A wooden bench near the wall here with colourful upholstery adds magic to the space. The flooring here is unpolished industrial concrete and the rough brush strokes on the concrete against raw metal, wood and glass form interesting design elements. This space leads to office of the top management i.e. the Vice President, the MD and the Directors, while one side is dedicated to a breakout zone followed by the boardroom and lounge.

The cabins are simple and smart with sleek tables of nine ft. crafted by reinforcing metal in veneer so that they do not sag. Another exclusive design aspect in each of the cabins is the concrete bench that extends towards the other side of glass partitions and acting as a planter bed. Kanan explains, "The planter bed extending from a bench on the other side of the glass is another detail where we have brought together hot-rolled steel, wood, glass and concrete, and softened it up with pebbles and plants."



11

10

The Break out zone features delicately-crafted lights that lend a classy touch.

11

The seating in the Director's cabin.





12

Note the intricate pendant light that illuminates the Directors' cabin.

Besides, rich detailing, decorative lighting, seating, niches with unfinished paint strokes, polished and textured stone and a dash of colour; all are carefully brought together to create a uniquely warm and sophisticated space. The rooms of the three directors are similar in decor, but the MDs room is unique. The MD's cabin is a composition of Italian marble desk, a wall board and a warm seating for discussions. The desk in this room faces the wall festooned with a soft board and also a writing wall. The seating is slightly away and informal. The Vice President's room is similar, but with formal black seating.

On the third floor, the other highlight is the lounge, where guests and delegates can be entertained after brain-storming sessions in the boardroom. The lounge has cosy seats and a long sleek bar counter with Italian marble reinforced with metal and veneer. The chic bar chairs add character to the area. Strikingly different is the breakout zone, which has bright dashes of colour designed to be a bit informal and fun. A full-length fixed glass window gives a breathtaking view of the rocky terrain of Hyderabad.

Kanan has attempted to look beyond functional aspects of a regular corporate workplace and has created a stunning space with oodles of character. ■



**KANAN MODI**

EL+D Architecture + Interior Design, an award winning Hyderabad based, design firm founded by principal architect, Kanan Modi has evolved into a multi-discipline studio with projects comprising of high-end residential, corporate, retail and hospitality across India. With a highly enthusiastic team of architects and crafts persons the design studio creates a unique experience with every project.

EL+D ARCHITECTURE + INTERIOR DESIGN  
 Usha Kiran Complex  
 Paradise Circle  
 Sarojini Devi Road  
 Secunderabad 500003  
 Telangana  
 +91 40 40072380  
 kmodi@elplustd.com